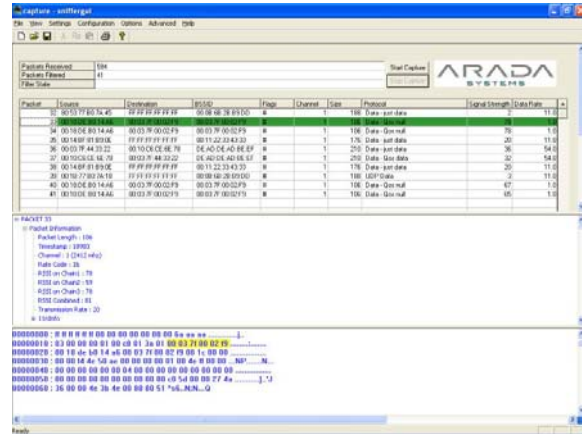


RadioEye™

802.11n Protocol Analyzer



Product Details

RadioEye is a powerful GUI based software tool (client plus driver package) capable of capturing and analyzing filtered 802.11n frames over a wireless network.

RadioEye can intercept and log traffic passing over a wireless network or part of a network. As data streams flow across the network, RadioEye captures each packet and eventually decodes and analyzes its content according to the appropriate protocol or other specifications.

It can inject packets over a wireless network—giving it a capability not found in similar products in the market.

Product Highlights

It can be used in any of the following scenarios:

- Analyze network problems
- Detect network intrusion attempts
- Monitor network usage
- Gather and report network statistics
- Filter suspect content from network traffic
- Reverse engineer protocols used over the network
- Debug client/server communications
- Debug network protocol implementations.

Supported Features	
Standards Compliant	Can capture and analyze all mandatory features of the 802.11n standard including 40MHz HT frames. Support for decoding aggregated frames
GUI-based	GUI-based for ease of use and quick analysis and debugging
API Support	Powerful API interface can be used in a third party application or script based test environment
Powerful Filter Support	Powerful filters to separate out packets of interest—packets destined to specific MAC address or a group of MAC addresses. Also filters based on various 802.11 packet types
Dual Channel Width Support	Supports 20MHz and 40MHz channels
Backward Compatible	Supports 802.11n/a/b/g Packet Capture
Hardware Support	Supports all Atheros 11n WLAN chipset generations
Software Support	Supports Windows XP
Packet Injection	Supports Injection of Packets